

blood

agents

Hydrogen Cyanide
Hydrogen Sulfide
Carbon Monoxide
Cyanogen Chloride



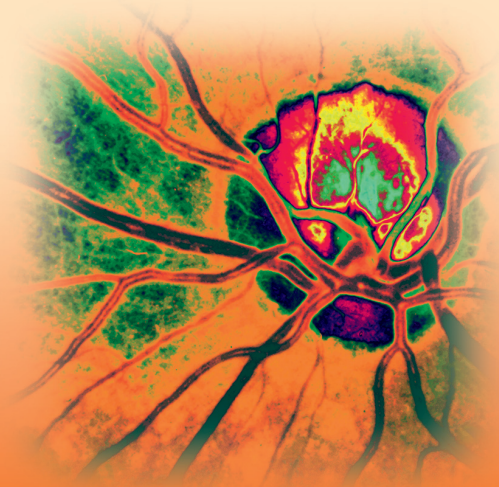
Hydrogen Cyanide

SYMPTOMS INCLUDE

- Vertigo
- Tachycardia
- Tachypnea
- Cyanosis
- Flu-like symptoms
- Nonspecific neurological symptoms

INDICATIVE LAB TESTS

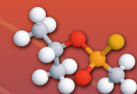
- Increased anion gap
- Metabolic acidosis
- Narrow pO₂ difference between arterial and venous samples



nerve

agents

Sarin
VX
Tabun
Soman



Sarin

SYMPTOMS INCLUDE

- Diarrhea, diaphoresis
- Urination
- Miosis
- Bradycardia, bronchospasm, bronchorrhea
- Emesis
- Lacrimation
- Salivation

INDICATIVE LAB TESTS

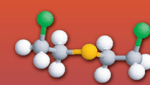
- Decreased cholinesterase
- Increased anion gap
- Metabolic acidosis



blister

agents

Sulfur Mustard
Phosgene Oxime
Nitrogen Mustard



Sulfur Mustard

SYMPTOMS INCLUDE

- Itching
- Erythema
- Yellowish blisters
- Flu-like symptoms
- Delayed eye irritation

INDICATIVE LAB TESTS

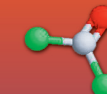
- Thiodiglycol present in urine



choking

agents

Phosgene
Diphosgene
Chlorine



Phosgene

SYMPTOMS INCLUDE

- Upper respiratory tract irritation
- Rhinitis
- Coughing
- Choking
- Delayed pulmonary edema

INDICATIVE LAB TESTS

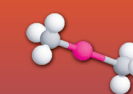
- Decreased pO₂
- Decreased pCO₂



metal

agents

Dimethylmercury
Lead • Copper
Mercury • Arsenic
Cadmium



Dimethylmercury

SYMPTOMS INCLUDE

- Cough
- Metallic taste
- CNS effects
- Shortness of breath
- Flu-like symptoms
- Visual disturbances

INDICATIVE LAB TESTS

- Proteinuria
- Blood mercury
- Urine mercury

Recognize the symptoms of chemical agent exposure

Contact the Nebraska Health and Human Services System 24/7 Reporting Line

402-471-1983

Contact the Nebraska Public Health Laboratory for specimen collection, packaging and shipping information at 402-559-6070

AFTER REGULAR HOURS PAGE 402-888-5588



www.nphl.org

NEBRASKA HEALTH AND HUMAN SERVICES SYSTEM

www.hhs.state.ne.us

NOVEMBER 2005

CHEMICAL TERRORISM